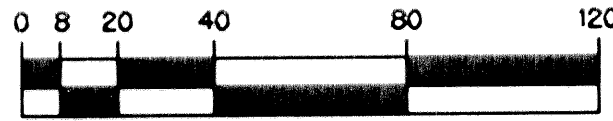


NAUTICA ISLES WEST - PLAT ONE

BEING A PORTION OF THE NORTHEAST ONE-QUARTER (N.E. 1/4) OF SECTION 35, TOWNSHIP 44 SOUTH, RANGE 42 EAST, CITY OF GREENACRES, PALM BEACH COUNTY, FLORIDA

SHEET 6 OF 7 APRIL, 2002

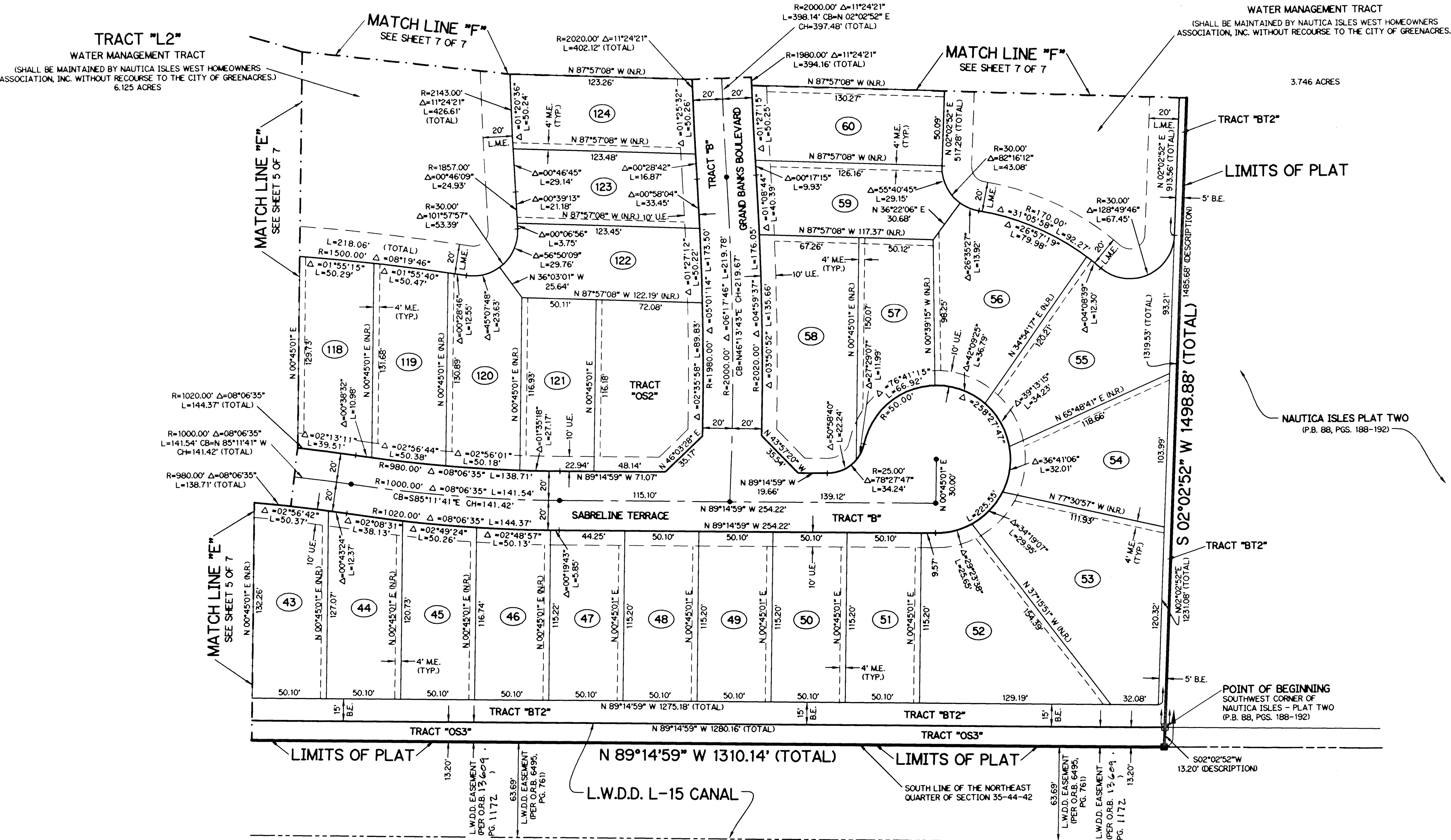
THIS INSTRUMENT PREPARED BY
PERRY C. WHITE, P.S.M. 4213, STATE OF FLORIDA
LAWSON, NOBLE AND WEBB, INC.
ENGINEERS PLANNERS SURVEYORS
420 COLUMBIA DRIVE
WEST PALM BEACH, FLORIDA 33409
LB-6674



SCALE: 1" = 40'

TRACT "L2"
WATER MANAGEMENT TRACT
(SHALL BE MAINTAINED BY NAUTICA ISLES WEST HOMEOWNERS ASSOCIATION, INC. WITHOUT RECOURSE TO THE CITY OF GREENACRES.)
6.125 ACRES

TRACT "L1"
WATER MANAGEMENT TRACT
(SHALL BE MAINTAINED BY NAUTICA ISLES WEST HOMEOWNERS ASSOCIATION, INC. WITHOUT RECOURSE TO THE CITY OF GREENACRES.)
3.746 ACRES



- LEGEND:**
- - SET PERMANENT REFERENCE MONUMENT, L.B. #6674
 - - FOUND PERMANENT REFERENCE MONUMENT, L.B. #6674
 - - FOUND PERMANENT CONTROL POINT, L.B. #6674
 - △ - DELTA ANGLE
 - B.E. - BUFFER EASEMENT
 - CB - CHORD BEARING
 - CH - CHORD DISTANCE
 - C.L. - CENTERLINE
 - D.B. - DEED BOOK
 - D.E. - DRAINAGE EASEMENT
 - L - ARC LENGTH
 - L.A.E. - LIMITED ACCESS EASEMENT
 - L.M.A.E. - LAKE MAINTENANCE ACCESS EASEMENT
 - L.M.E. - LAKE MAINTENANCE EASEMENT
 - L.W.D.D. - LAKE WORTH DRAINAGE DISTRICT
 - M.E. - MAINTENANCE EASEMENT
 - N.R. - NOT RADIAL
 - N.T.S. - NOT TO SCALE
 - O.R.B. - OFFICIAL RECORD BOOK
 - P.B. - PLAT BOOK
 - P.G.S. - PAGES
 - P.S.M. - PROFESSIONAL SURVEYOR AND MAPPER
 - R - RADIUS
 - RAD. - RADIAL
 - R/W - RIGHT-OF-WAY
 - S.T. - SURVEY TIE
 - U.E. - UTILITY EASEMENT

